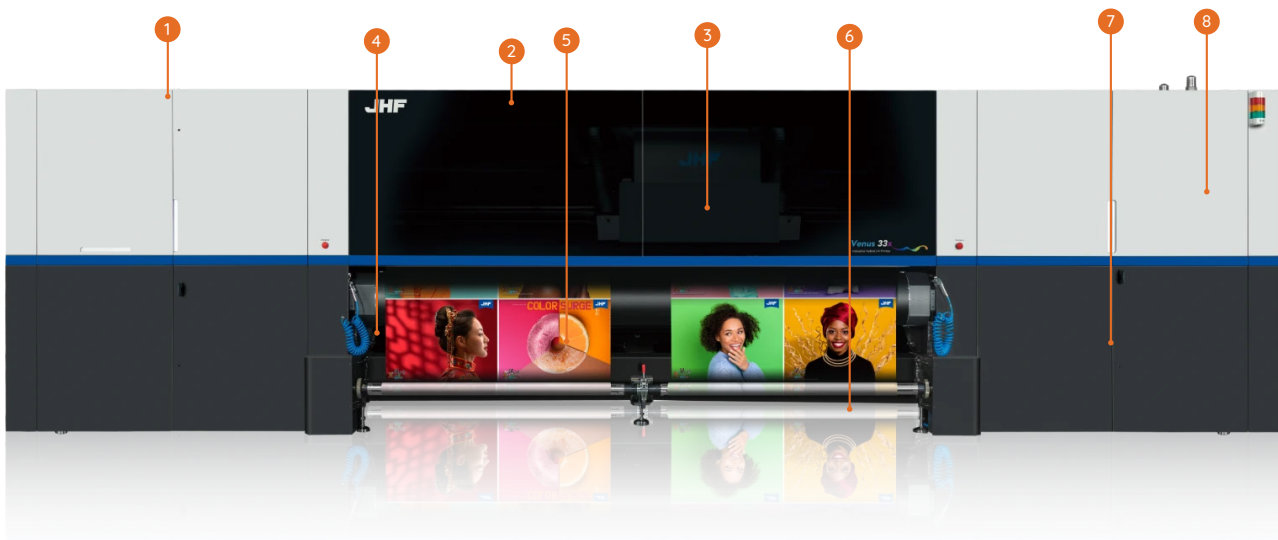


Venus 33X Industrial Hybrid UV Printer

The JHF Venus 33X is a 3.2 m ultra-high-end hybrid UV printer designed for both roll and sheet printing. With dual-roll and multi-sheet capability, it delivers exceptional productivity and precision. Featuring intelligent edge detection, automatic media handling, and an energy-efficient German Honle curing system, the Venus 33X combines high performance with eco-friendly operation, empowering businesses to achieve greater efficiency and sustainable growth.

Product Information

- | | | |
|---------------------------|------------------------|-------------------------|
| ① Control Cabinet | ④ UV-LED Curing System | ⑦ Ink System/Bulk Tanks |
| ② Linear Motor Guide Rail | ⑤ Vacuum Bed | ⑧ PLC Control Panel |
| ③ Carriage Assembly | ⑥ Feeding System | |



◆ Flexible production mode

- Capable of printing either a single 3.2-meter-wide roll or simultaneously printing two rolls of different specifications within 1.6 meters

◆ Intelligent rigid sheets feeding system

- During the sheets printing process, multiple rigid sheets can be printed simultaneously, achieving multi-purpose use with one machine and saving production costs.

◆ Efficient ink curing system

- Adopting the German-made Honle mercury lamp, it is efficient, energy saving and noise-reducing, improving curing efficiency.

◆ Ink constant temperature control system

- The card stably controls the temperature to ensure consistent ink properties in different environments.

◆ Automatic media edge detection & intelligent layout of multiple rolls

- The Automatic Edge Detection System accurately detects the boundaries and width of multiple material rolls. The Intelligent Typesetting function automatically optimizes the layout, supporting re-nesting of multiple tasks. It allows for adding new tasks while printing, ensuring seamless multi-task processing.
- The Automatic Edge Detection System accurately detects the boundaries and width of multiple material rolls. The Intelligent Typesetting function automatically optimizes the layout, supporting re-nesting of multiple tasks. It allows for adding new tasks while printing, ensuring seamless multi-task processing.

Headquarters: DIP-2, Plot No: 597-634, P.O. Box No: 27402, Dubai, UAE. Tel: +971 4 8049800.

UAE Customer Support # 800 74463. Locations: UAE, KSA, OMAN, KUWAIT, QATAR & BAHRAIN

Please Visit our Online Store at www.bluerhine.store

Venus 33X Industrial Hybrid UV Printer

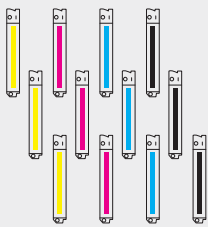
◆ Electronic height measurement function

- Automatically detects the thickness of the media, seamlessly switches printing mode according to the media, greatly improving the user experience.

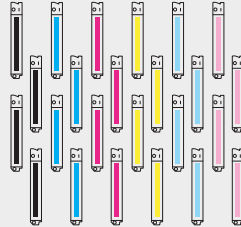
◆ Multi-layer printing

- Featuring 8 freely editable layers, the image, ink volume, and parameters for each layer can be independently adjusted. It offers a variety of application solutions, including white and color multi-layer printing.

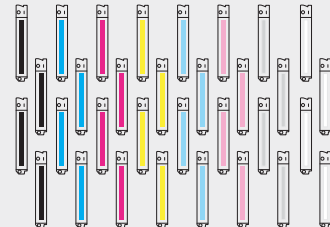
Color Configuration



Three rows of four colors (CMYK)



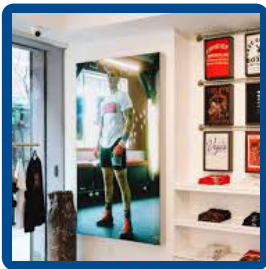
Four rows of six colors (CMYK/Lc/Lm)



Four rows of eight colors (CMYK/Lc/Lm/Lk/W)

Application

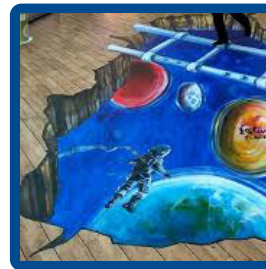
Backlit Retail Displays



Window Graphics



Floor Graphics



Headquarters: DIP-2, Plot No: 597-634, P.O. Box No: 27402, Dubai, UAE. Tel: +971 4 8049800.

UAE Customer Support # 800 74463. Locations: UAE, KSA, OMAN, KUWAIT, QATAR & BAHRAIN

Please Visit our Online Store at www.bluerhine.store

Venus 33X Industrial Hybrid UV Printer**Technical Specifications**

Printing width	3200mm		
Printhead	Kyocera 6C*4	Standard configuration: 4C*4/(4C+2W)*4/(6C+2W)*4/(4C+4C)*4	
Printing Mode	High speed mode	300x1800dpi	350 m ² /h
	Production Mode	600x1200dpi	265 m ² /h
	Fine mode	600x1800dpi	180 m ² /h
	Ultra fine mode	1200x1200dpi	140 m ² /h
<small>(the above mentioned speed is based on speed without smooth, radiant effect)</small>			
Printing media	Flexible media: 3P cloth, PE film, PVC banner, various textile fabrics and other flexible medias. Rigid Sheets: corrugated board, PC board, acrylic board, glass, etc.		
Printing thickness	≤50mm		
Ink type	UV ink		
Ink color	CMYK Lc Lm, W optional		
Environmental conditions	Temperature 18~28°C, Humidity 30%~70%		
Control software	JHF Printer V5.0		
Compressed air	≤8kg/ CM ²		
Data transmission interface	PCIE		
Power requirements	380V, 32KW		
Machine size	L 8185mm x W 2610mm x H 2160mm		
Machine weight	9000kg		

Headquarters: DIP-2, Plot No: 597-634, P.O. Box No: 27402, Dubai, UAE. Tel: +971 4 8049800.

UAE Customer Support # 800 74463. Locations: UAE, KSA, OMAN, KUWAIT, QATAR & BAHRAIN

Please Visit our Online Store at www.bluerhine.store